





EAST ELEVATION

SCALE: 1/4" = 1'-0"

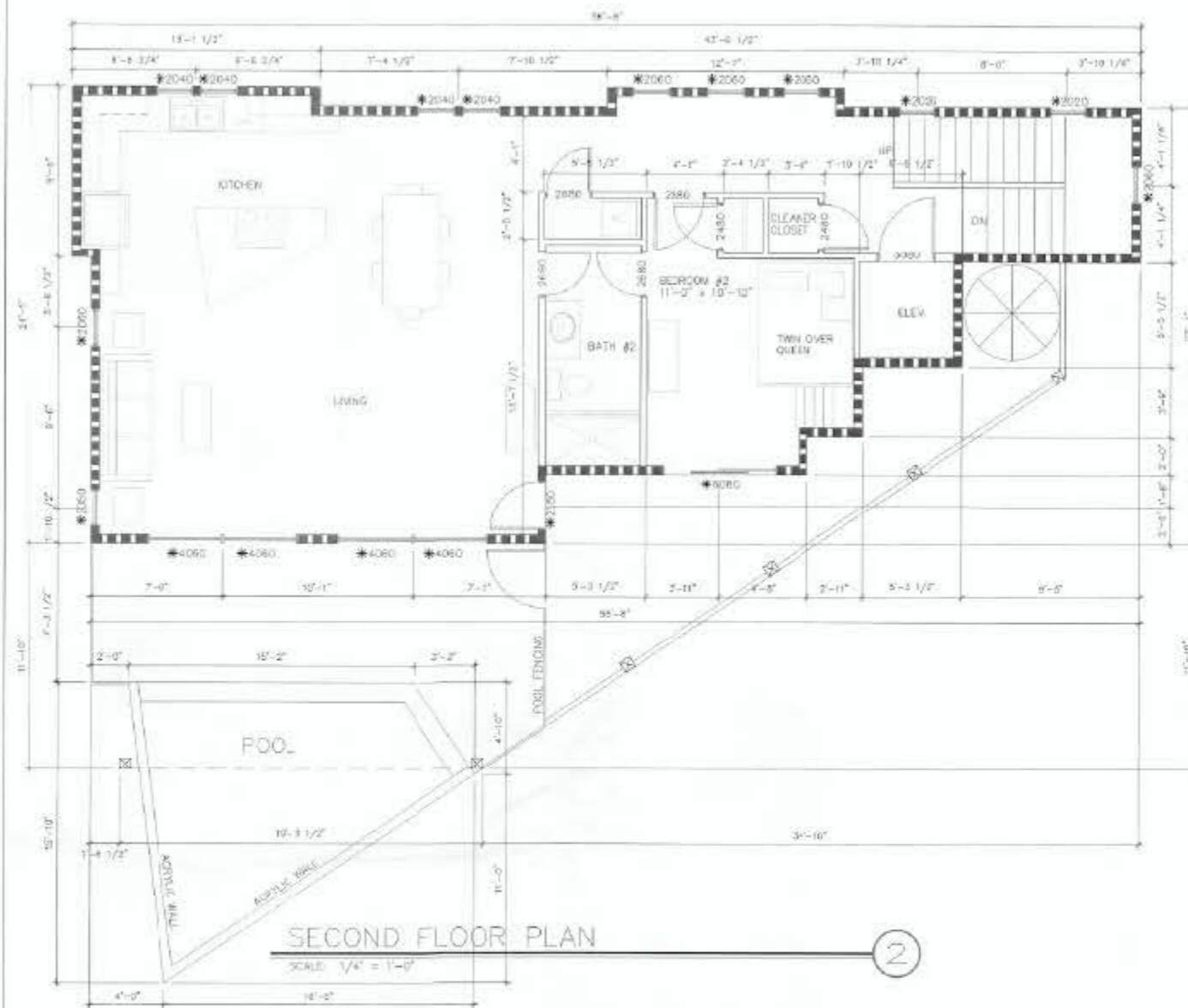
1



NORTH ELEVATION

SCALE: 1/4" = 1'-0"

2



2

3,380 NOTES: DOOR & WINDOW TAGS EXAMPLE IS 3'-0" HORIZONTAL X 8'-0" VERTICAL.

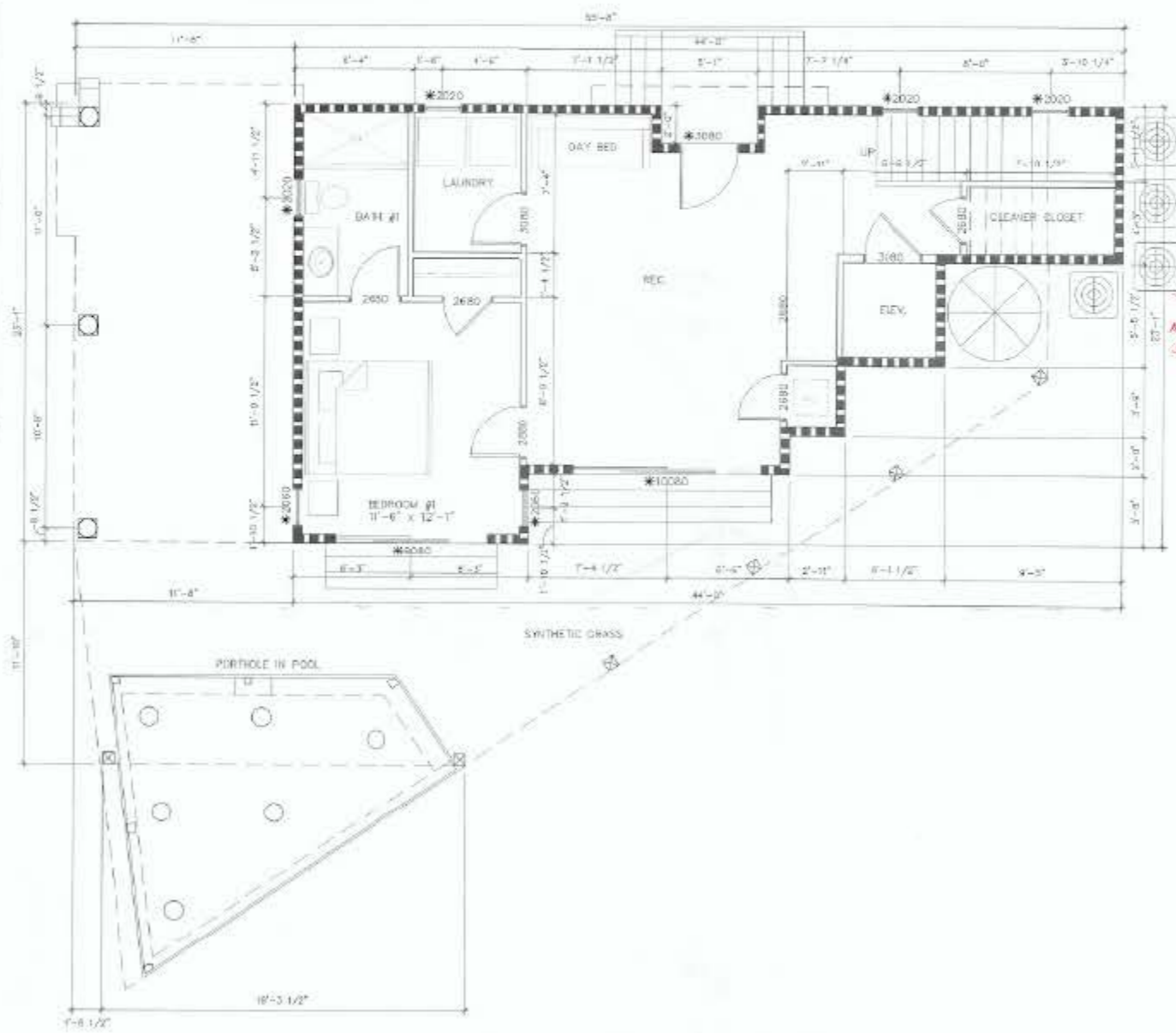
DIMENSIONS SHOWN ARE FROM FACE TO FACE OF STUD FOR INTERIOR WALLS AND TO FACE OF STUD FOR EXTERIOR WALLS.

* ALL WINDOWS & EXTERIOR DOORS W/ GLAZING TO HAVE "TURTLE GLAZING" W/ 1/2" TINT PROVIDING LIGHT TRANSMITTANCE VALUE OF 45% OR LESS.

WALL LEGEND

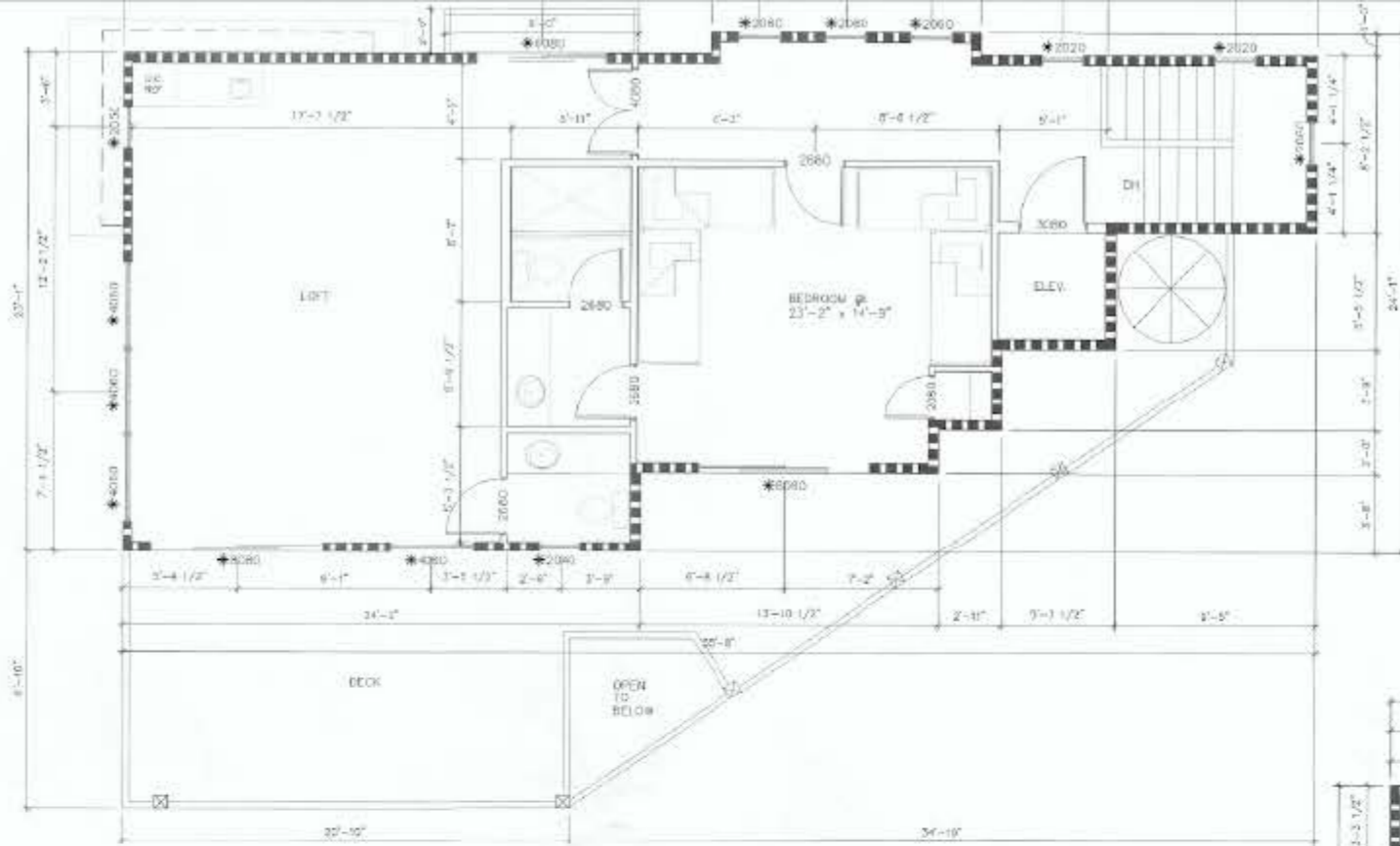
- EXTERIOR BEARING WALL - ONE HOUR RATED WITH EXPOSURE FROM BOTH SIDES. FIBER CEMENT SMOOTH LAP SIDING OVER TYVEK HOUSE WRAP OVER 1/2" 1" SOED FLAMEBLOCK PLUS W/ STRUCTURAL SHEATHING (NAF PATTERN) - 4" O.C EDGES 8" O.C FIELD ON 2X8 WB STUDS @ 16" O.C. W/ R-19 BATT INSUL & 5/8" TYPE "X" GIP. BD. INSIDE. BUILD IN ACCORD W/ UL V311
- INTERIOR WALL - 2X4 WB STUDS AT 16" O.C. 1/2" 1/2" GYP. BD. ON BOTH SIDES & SOUND BATT INSULATION IN ALL WALLS AND BETWEEN FLOORS.

- Ensure one bathroom has 29" toe clearance



FIRST FLOOR PLAN

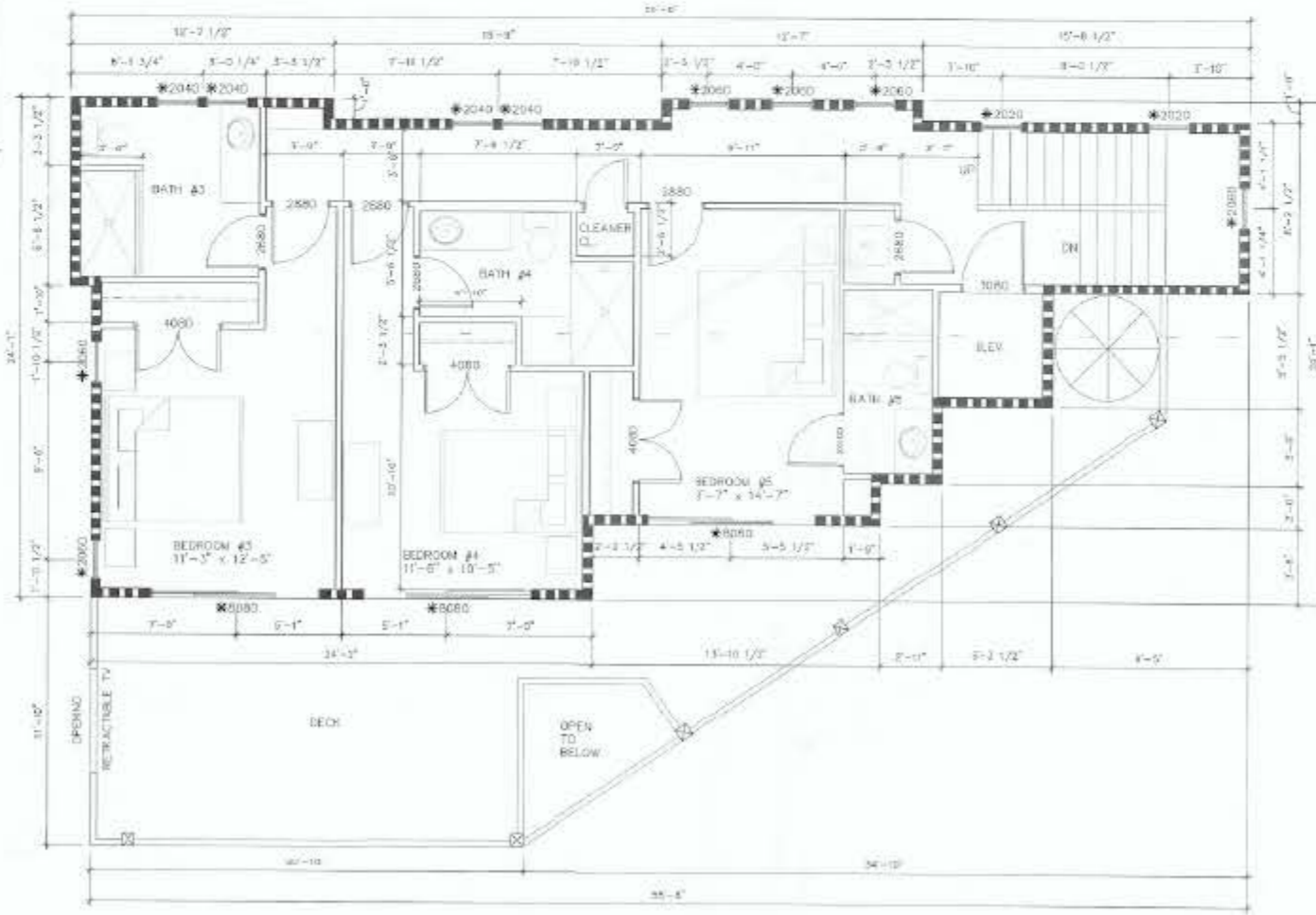
1



HORIZONTAL X $\frac{1}{8}$ " VERTICAL
 DIMENSIONS SHOWN ARE FROM FACE TO FACE OF STUD FOR INTERIOR WALLS AND TO FACE OF STUD FOR EXTERIOR WALLS.
 * ALL WINDOWS & EXTERIOR DOORS W/ GLAZING TO HAVE "TYPICAL GLAZING" W/ TINT PROVIDING LIGHT TRANSMITTANCE VALUE OF 45% OR LESS

EXTERIOR BEARING WALL - ONE HOUR RATED WITH EXPOSURE FROM BOTH SIDES. FIBER CEMENT SMOOTH LAP SIDING OVER TYVEK HOUSE WRAP OVER 15/32" LP 1 SIDED FLAMEBLOCK PLUS NO. 3 STRUCTURAL SHEATHING (NAIL PATTERN - 4" O.C. EDGES & 6" O.C. FIELD) ON 2X4 W/ STUDS @ 16" O.C. W/ R-19 BATT INSUL. & 5/8" TYPE 'XT' GYP. BD. INSIDE. BUILD IN ACCORD. W/ UL V581
 INTERIOR WALL - 2X4 W/ STUDS AT 16" O.C. W/ 1/2" GYP. BD. ON BOTH SIDES & SOUND BATT INSULATION IN ALL WALLS AND BETWEEN FLOORS.

FOURTH FLOOR PLAN
 SCALE: 1/4" = 1'-0"
 2



THIRD FLOOR PLAN
 SCALE: 1/4" = 1'-0"
 1